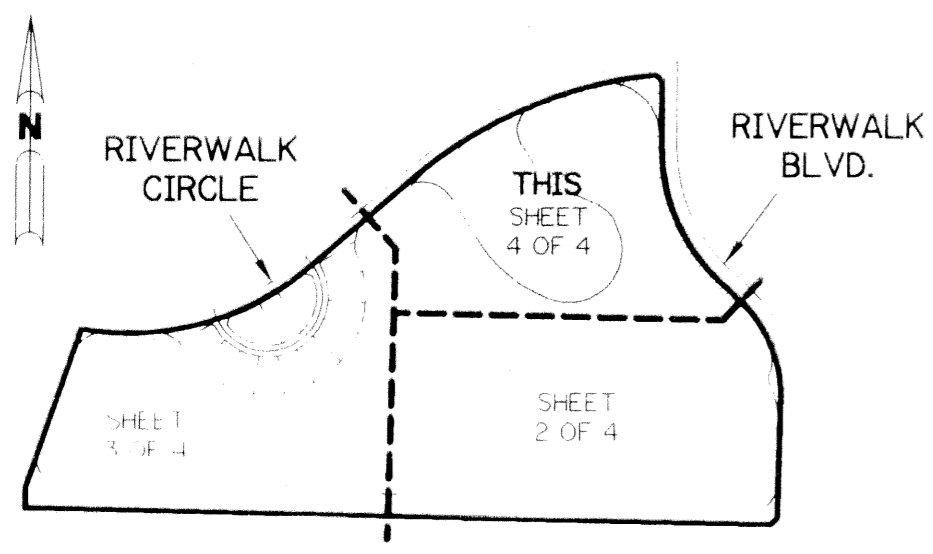


# RIVERWALK - PLAT SEVEN

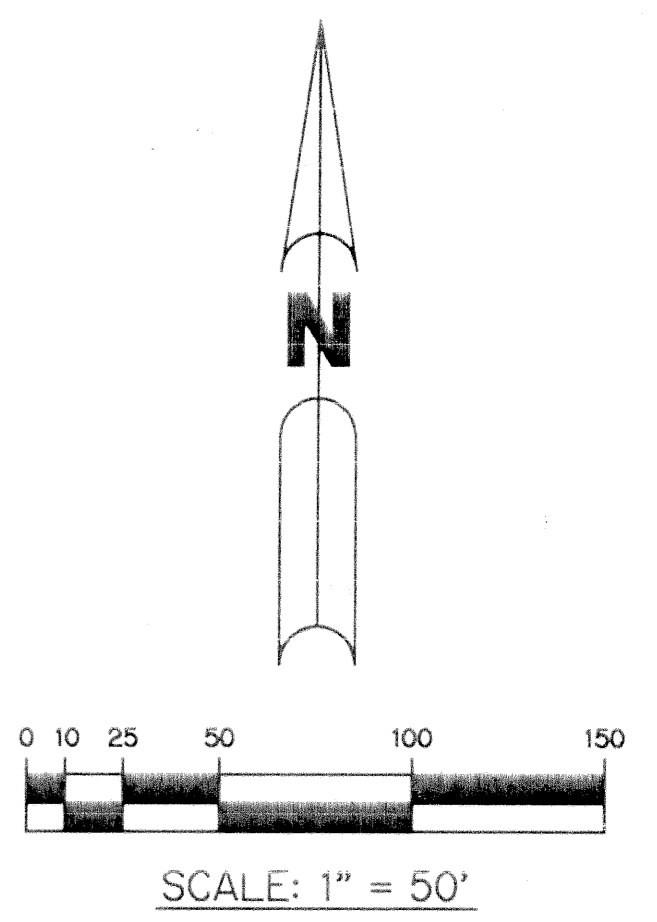
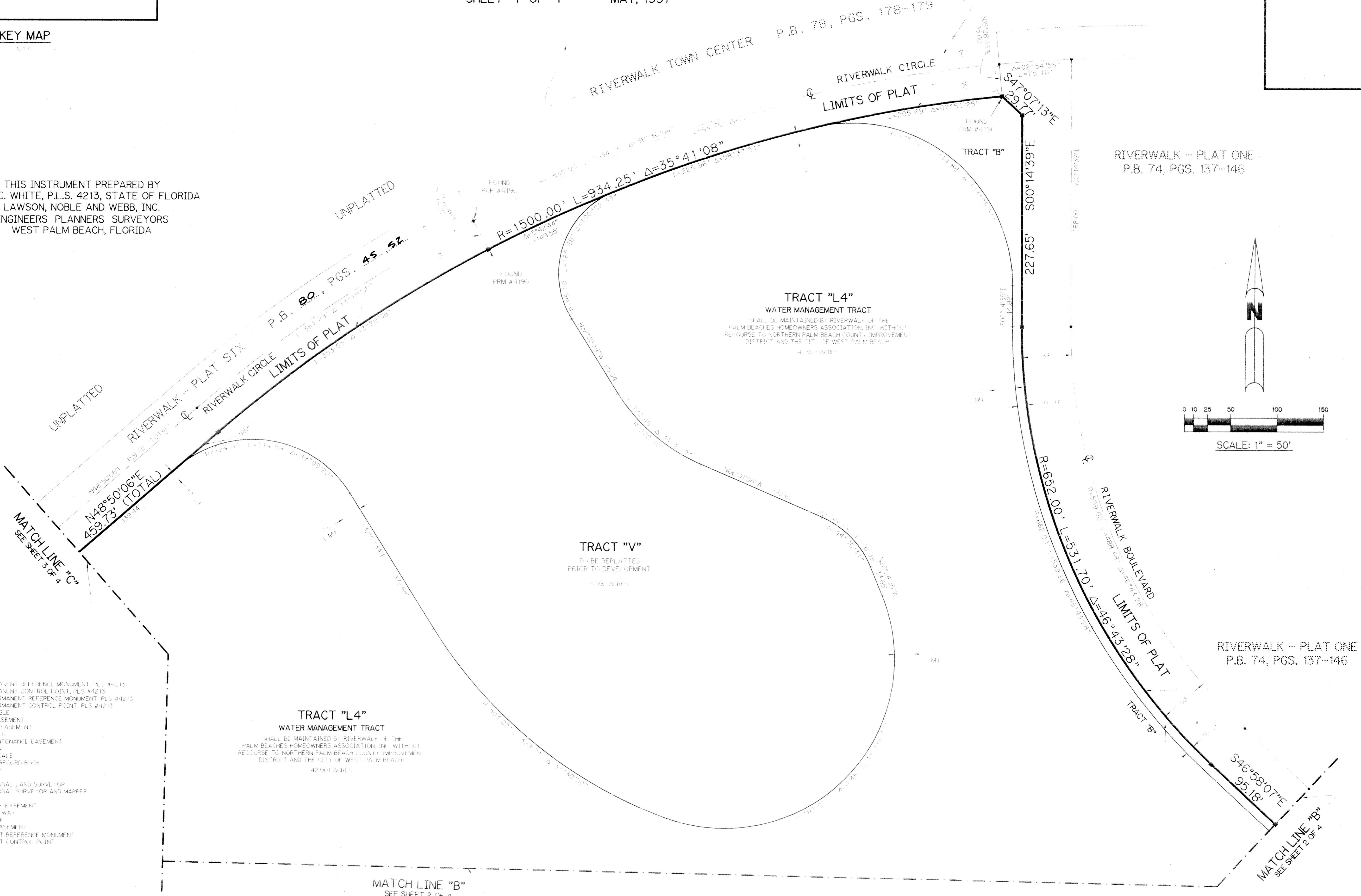
A PARCEL OF LAND LYING IN SECTION 21, TOWNSHIP 43 SOUTH,  
RANGE 42 EAST, CITY OF WEST PALM BEACH,  
PALM BEACH COUNTY, FLORIDA.

SHEET 4 OF 4 MAY, 1997



KEY MAP  
NTS

THIS INSTRUMENT PREPARED BY  
PERRY C. WHITE, P.L.S. 4213, STATE OF FLORIDA  
LAWSON, NOBLE AND WEBB, INC.  
ENGINEERS PLANNERS SURVEYORS  
WEST PALM BEACH, FLORIDA



**LEGEND:**

- (1) SET PERMANENT REFERENCE MONUMENT, PLS #4213
- (2) SET PERMANENT CONTROL POINT, PLS #4213
- (3) FOUND PERMANENT REFERENCE MONUMENT, PLS #4213
- (4) FOUND PERMANENT CONTROL POINT, PLS #4213
- (5) DELTA ANGLE
- (B) BUFFER EASEMENT
- (D) DRAINAGE EASEMENT
- (L) ARC LENGTH
- (M) CARE MAINTENANCE EASEMENT
- (N) NOT RADIAL
- (NT) NOT TO SCALE
- (RR) REFUTAL RECURSIVE
- (FB) PLAT BOOK
- (PNS) PAGES
- (PLS) PROFESSIONAL LAND SURVEYOR
- (PLM) PROFESSIONAL SURVEYOR AND MAPPER
- (R) RADIALS
- (RE) RIVERWALK EASEMENT
- (R/W) RIGHT-OF-WAY
- (S) SERVICE
- (U) UTILITY EASEMENT
- (PRM) PERMANENT REFERENCE MONUMENT
- (C.P.) PERMANENT CONTROL POINT

RIVERWALK PLAT SEVEN  
 SUBDIVISION # 80  
 BOOK 80  
 FLOOD ZONE  
 QUAD # SE  
 PUD NAME City of West Palm Beach TR 870  
 PAGE 56  
 FLOOD MAP #  
 ZONING  
 ZIP CODE